

SUPRA™

SPECIAL FEATURES

These are important, unique, and distinguishing attributes of SUPRA product.

These user friendly features of SUPRA enhance the overall learning process and include:

- 1. Data and Information
- 2. Calculation Programs
- 3. Try Yourself
- 4. Interactive Examples
- 5. Topics
- 6. Go To
- 7. Hotwords
- 8. Interludes
- 9. User Categories



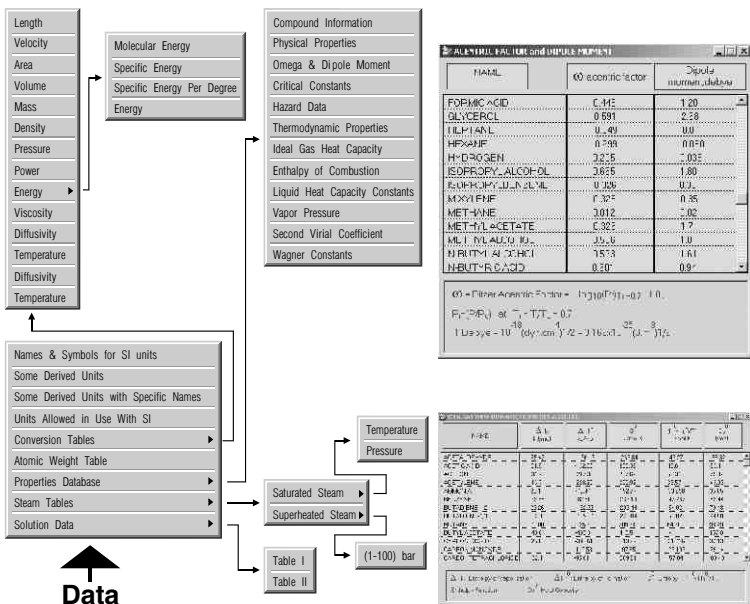
SUPRA LEARNING SOLUTIONS

H10, Dattaguru Society, Deonar, Mumbai 400 088, INDIA
Web Site: www.eChEguru.com ♦ Email: info@eChEguru.com

Copyright © Supra Learning Solutions. All Rights Reserved.

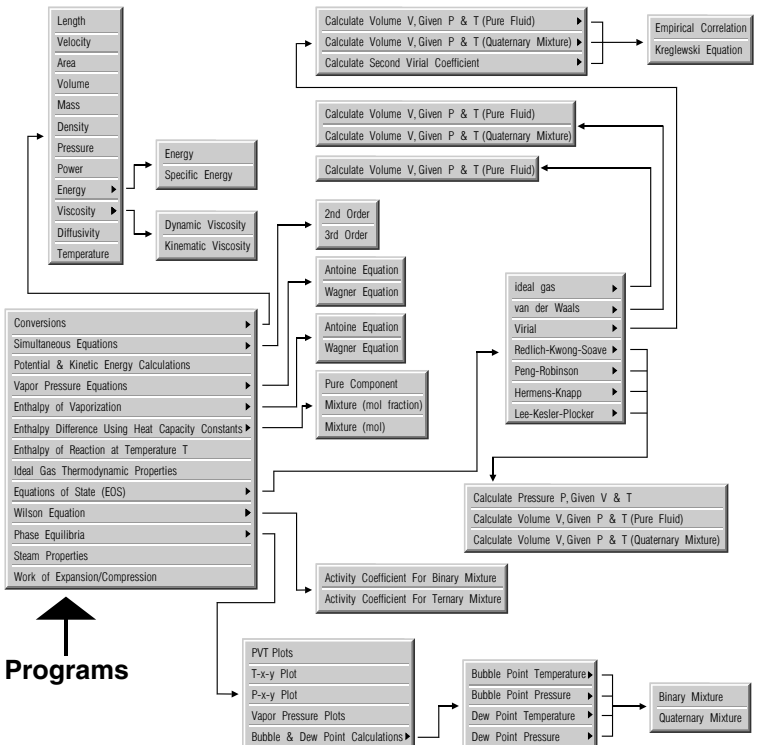
1 Data and Information

Tables for units conversion, atomic weights, and material properties database are provided for quick reference and computations



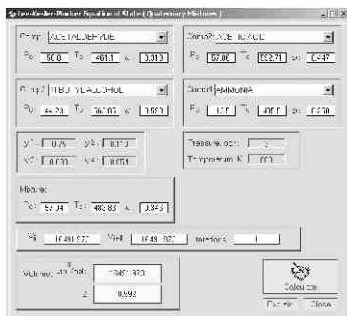
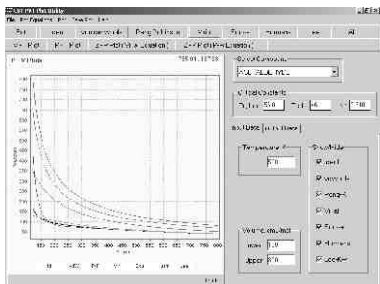
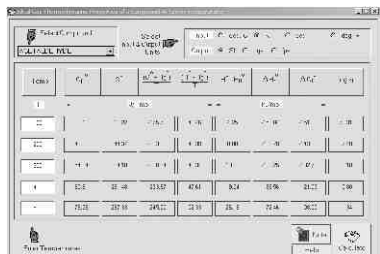
2 Calculation Programs

i. Smooth navigation is performed through a Flowchart of computer programs



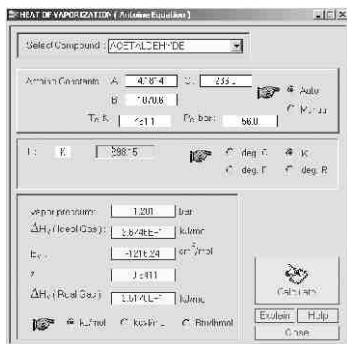
Calculation Programs

ii. About 63 Computer programs for complex mathematical calculations are provided for ease of operation

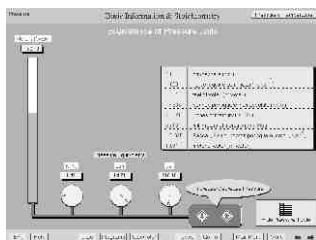
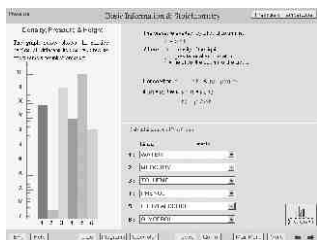
Software window titled "VLE Data: Thermodynamic Properties of Acetaldehyde Vapor Equilibrium". It displays a table of thermodynamic properties for Acetaldehyde.

T (K)	T^* (K)	T^*/T	$\ln(P^*/P)$	$\ln(P^*/P)$	$\ln(P^*/P)$	$\ln(P^*/P)$	$\ln(P^*/P)$	$\ln(P^*/P)$
100	100	1.000	0.000	0.000	0.000	0.000	0.000	0.000
110	110	1.000	0.000	0.000	0.000	0.000	0.000	0.000
120	120	1.000	0.000	0.000	0.000	0.000	0.000	0.000
130	130	1.000	0.000	0.000	0.000	0.000	0.000	0.000
140	140	1.000	0.000	0.000	0.000	0.000	0.000	0.000
150	150	1.000	0.000	0.000	0.000	0.000	0.000	0.000
160	160	1.000	0.000	0.000	0.000	0.000	0.000	0.000
170	170	1.000	0.000	0.000	0.000	0.000	0.000	0.000
180	180	1.000	0.000	0.000	0.000	0.000	0.000	0.000
190	190	1.000	0.000	0.000	0.000	0.000	0.000	0.000
200	200	1.000	0.000	0.000	0.000	0.000	0.000	0.000



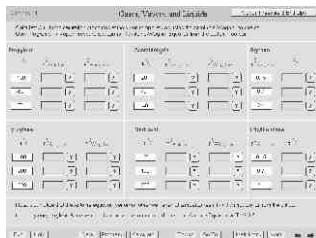
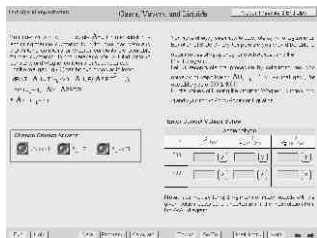
3 Try Yourself

To understand the basic concepts, special programs are included for the users to try them and See the results



4 Interactive Examples

To facilitate step by step solving of examples , interactivity such as fill in the blanks, click correct answer is provided



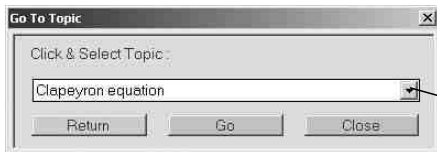
5 Hotwords

These are provided in the text and enable the user to link the related information quickly

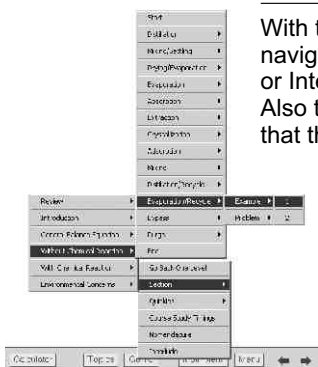


6 Topics

With the help of the list of topics given, the user can quickly navigate through the course material by selecting the particular topic



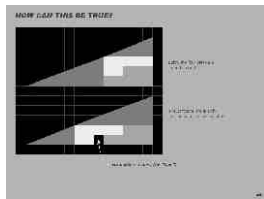
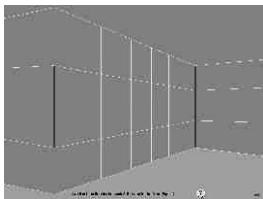
7 Go To



With the help of 'Go To', the user can quickly navigate to any Section, Example, Problem, or Interlude by selecting the proper topic. Also the navigated pages are tracked so that the user can go back to earlier pages

8 Interludes

These provide a "Break" to relax, from the study of the subject matter (suggested after every 25-30 minutes of study)
A Useful and Interesting Information other than the study matter is provided as a means of relaxation



9

User Categories

Each Module has a built in user management system with a database

There are four user categories

Administrator: One who manages the system and student accounts*

Old Student: One who is already enrolled by the system for the course

New Student: One who is enrolling herself/himself for the course

Visitor: Not enrolled by the system for the course though (s)he can go through the course material except Tests and Quizzes

Students' information (name, password, marks of Tests and Quizzes) is stored in the database